



GENDER MATTERS

from the New Hampshire Women's Foundation

WHEN YOU KNOW THE FACTS, YOU CAN ACT!

FALL 2017 REPORT

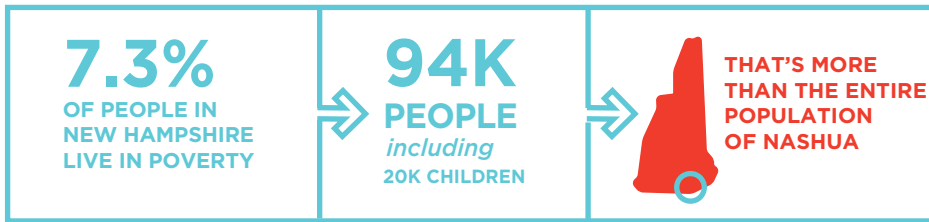
Women and Poverty in New Hampshire

In this edition of Gender Matters, we're looking at the 2016 American Community Survey data about poverty released by the United States Census Bureau in September.

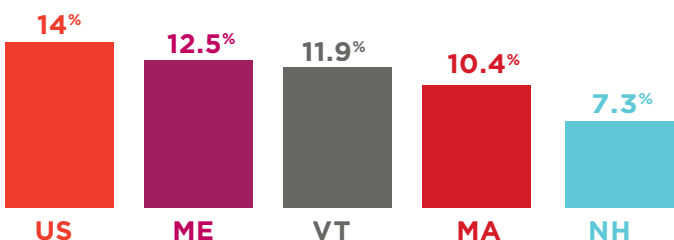
<\$24,339

FEDERAL POVERTY LEVEL

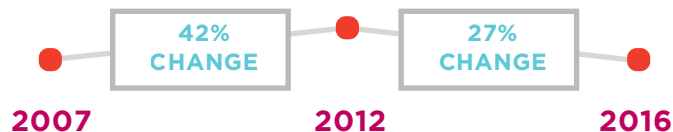
Living in poverty means having household income below the federal poverty level, or less than \$24,339 per year for a family of four with two kids.



NEW HAMPSHIRE HAS THE LOWEST POVERTY RATE IN THE COUNTRY

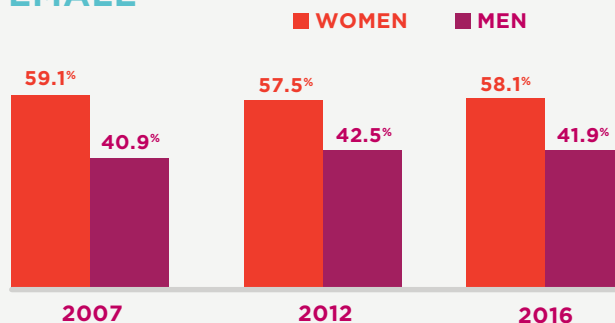


NEW HAMPSHIRE POVERTY IS NEAR PRE-RECESSION LEVEL



Poverty peaked at 10% in 2012, when approximately 128,000 people lived in poverty.

POVERTY IS FEMALE

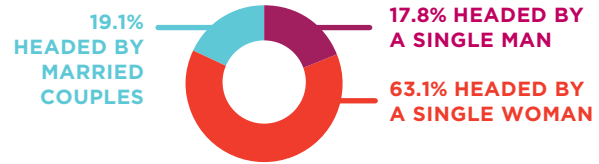


WOMEN MAKE UP A MUCH HIGHER SHARE OF ADULTS LIVING IN POVERTY.

POVERTY HITS SINGLE MOMS HARDEST

MORE THAN 1 IN 5 FAMILIES WITH CHILDREN HEADED BY A SINGLE WOMAN LIVE IN POVERTY.

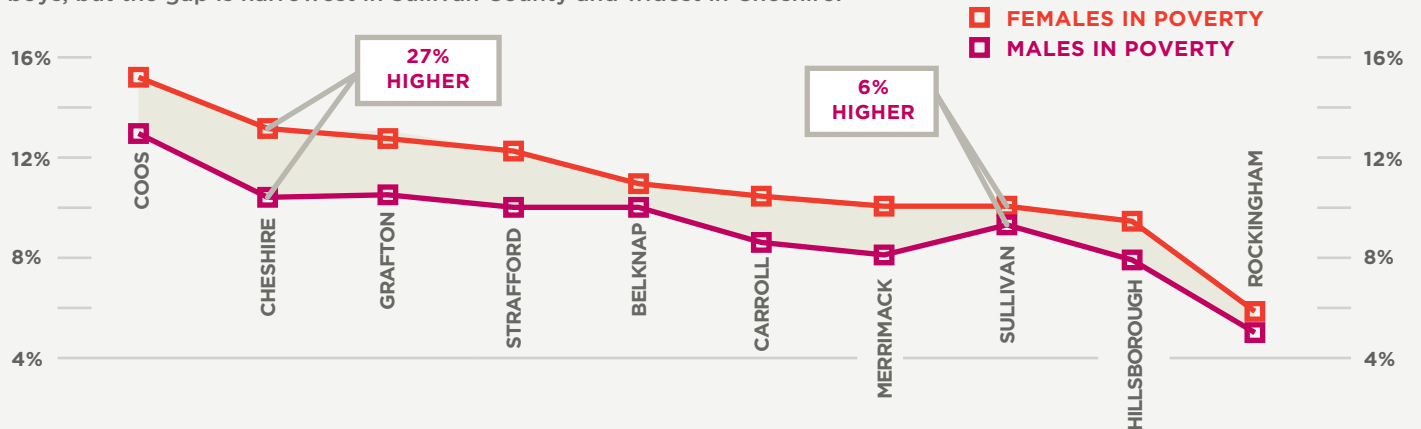
That's nearly 2 times the rate of poverty for families with children headed by a single man - and 10 times the rate for married couples with children.



NEARLY 2 IN 3 FAMILIES WITH CHILDREN WHO ARE LIVING IN POVERTY ARE HEADED BY A SINGLE WOMAN.

POVERTY GENDER GAP BY COUNTY

In every county in New Hampshire, the poverty rate for women and girls exceeds the poverty rate for men and boys, but the gap is narrowest in Sullivan County and widest in Cheshire.



WE NEED MORE DATA ABOUT STATE ASSISTANCE

The Department of Health and Human Services² keeps gender data about the people who apply for assistance for a household, but not about all of the people in the household. As a result, we don't know how many assistance program participants are men and how many are women. And the Department doesn't keep any gender data at all for the Supplemental Nutrition Assistance Program (food stamps).



MEDICAID

In Medicaid, only 30.6 percent of households are headed by a man.



FINANCIAL ASSISTANCE TO NEEDY FAMILIES (CASH ASSISTANCE)

In Financial Assistance to Needy Families (cash assistance), only 86 of 1,199 households are headed by a man.



SUPPLEMENTAL NUTRITION ASSISTANCE PROGRAM

The Department does not maintain gender data in the Supplemental Nutrition Assistance Program (food stamps).

FOOTNOTES

1.) In this report, "with children" means the presence of 1 or 2 related children under 18.

2.) Department of Health and Human Services data is as of August 2017, and provided courtesy of the agency.



new hampshire
**WOMEN'S
FOUNDATION**

We invest in opportunity and equality for women and girls in New Hampshire through research, education, advocacy, and grantmaking.



Gender Matters is made possible with the support of

