

NEWS

News & Updates from the New Hampshire Women's Foundation



From left to right: Lucy Hodder, Joe Keefe, Marianne Jones, Jennifer Newsom, Gov. Maggie Hassan, Congresswoman Annie Kuster, Jo Lamprey, Mary Johanna Brown.

The Women's Fund of NH and the NH Women's Initiative have joined forces to create the New Hampshire Women's Foundation.

The announcement was made to a sold-out audience of 600 leaders from across NH who attended the 10th annual Women Building Community Luncheon (see photos page 3) at the Radisson Hotel in Manchester, featuring keynote speaker and filmmaker Jennifer Siebel Newsom.

According to Marianne Jones, Executive Director, Women's Fund of NH, "After nearly two years of exploring the opportunities for a partnership, it was a unanimous decision across both the boards

of the Women's Fund and the NH Women's Initiative to join forces to create the NH Women's Foundation." Jones added, "The collaboration to create the NH Women's Foundation combines nearly 100 years of shared history focused on advocating for women and girls in NH." She explained that the NH Women's Initiative was created in 2012 with the consolidation of three NH organizations that included the Commission on the Status of Women (1969), the Women's Lobby and Alliance (1980), and the Women's Policy Institute (2002).



Fund The Future
nhwomensfoundation.org >>

Donate Now

Be part of our 2014 Fund The Future Challenge
100% match up to \$25,000
nhwomensfoundation.org



Attend January 20th

Jill Lepore, and her book
The Secret History of Wonder Woman
in Portsmouth
themusichall.org



Love us? Then like us!

Join our facebook community at: [facebook.com/nhwomensfoundation](https://www.facebook.com/nhwomensfoundation)
Follow us on twitter!
[@NHwomensfndn](https://twitter.com/NHwomensfndn)



new hampshire
**WOMEN'S
FOUNDATION**

- 1969 Commission on the Status of Women
- 1980 The Women's Lobby and Alliance
- 1998 Women's Fund of New Hampshire
- 2002 The Women's Policy Institute
- 2012 The New Hampshire Women's Initiative



Board of Directors

Mary Johanna Brown
Chair

Martha Fuller Clark
Vice Chair

Robin Pollard
Immediate Past Chair

Martha Cottrill
Treasurer

Alison Pyott
Vice Treasurer

Ellen Koenig
Secretary

Sarah Mattson Dustin
Vice Secretary

Marianne M. Jones
President

Jennifer Alford-Teaster

Sandy Belknap

Lindsey Carmichael

Hope Damon

Gemma Dreher

Rasheeda Eltag Mohamed

Gemma Waite French

Sally Gayer

Mary Ellen Hettinger

Beth Kolehmainen

Susan Martore-Baker

Alida Millham

Debora Pignatelli

Karen C. Prior

Susan Ratnoff

Mary Rauh

Lisabritt Solsky

Chris Strong

Laura Thibault

Contact Us

Two Delta Drive
Concord, NH 03301

nhwomensfoundation.org
603.226.3355



Better Together

Thank you to the nearly 600 people who joined us October 16th as we celebrated our 10th annual Women Building Community Luncheon and announced the newly merged New Hampshire Women's Foundation. I have been both moved and inspired by the countless ways we have received support both at and after this historic event. From new donors, new volunteers, new ideas and personal stories, I think we can clearly say that advancing gender equality is a mission that resonates with the citizens and leaders of New Hampshire.

So what's next? Emerging as the premiere organization in the state dedicated to creating opportunity and equality for women and girls, the New Hampshire Women's Foundation must be strategic and steadfast in pursuit of its mission. Our ability to create change is greater than ever, with the power of our focused agenda working across the now integrated program areas of research, education, philanthropy and advocacy. As we enter into strategic planning this winter, these are the tools by which we will craft our three-year plan.

How can you help? Whether you donate to our **Fund The Future 2014 Challenge**, comment on facebook, host an event, or write a letter to the editor... we need your help now. We are committed to engaging women and men at every age, stage and place as we move forward and look for innovative solutions to the issues our stakeholders care deeply about. And that is where you come in.

Donate today. Share your voice. Roll up your sleeves.

And let's make a difference together.

Sincerely,

Mary Johanna Brown
Chair

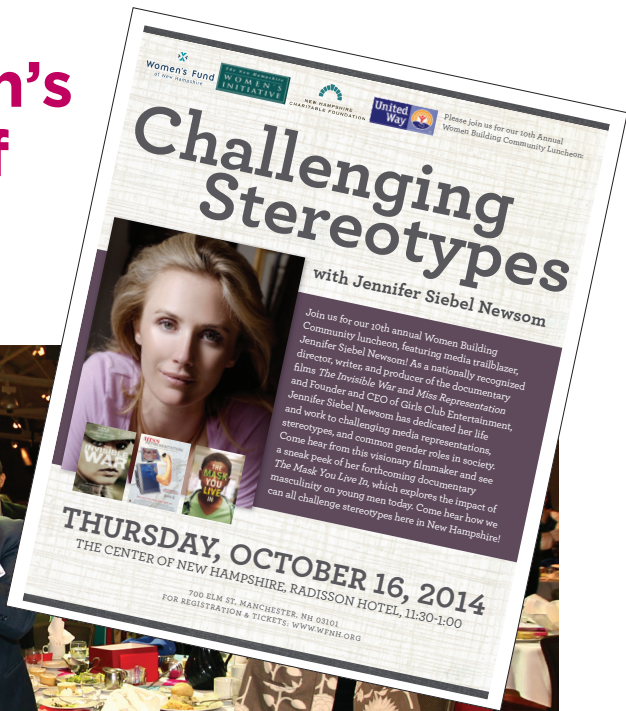


Welcome
Ellen Koenig
Interim Executive Director

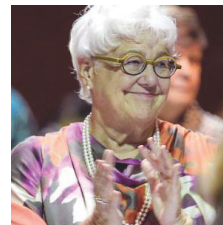


With appreciation
Marianne M. Jones
Outgoing Executive Director

On Behalf of the NH Women's Foundation, United Ways of NH, and the NH Charitable Foundation, Thank You!



From a sold out crowd of 600 attendees to a standing ovation for our featured speaker Jennifer Siebel Newsom, the **10th annual Women Building Community Luncheon** was a tremendous success! Special thanks to our presenting partners, the New Hampshire Charitable Foundation and United Ways of New Hampshire. Thank you to our speakers Patrick Tufts, Shari Landry, Gov. Maggie Hassan, Jo Lamprey and Joe Keefe of PAX World Mutual Funds. This event was a great success because of you!



Special thank you to our sponsors:



Cambridge Trust Company
of New Hampshire



Katherine Wells Wheeler



Sue & Bob Thoresen

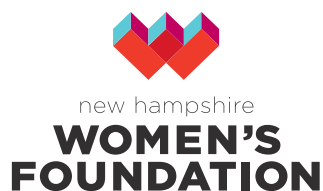




Founders and Board members gathered at the Women Building Community Luncheon on October 16th.

Seated from left to right: Margie Smith, Liz Hager, Perry Williamson, Martha Fuller Clark, Barb Zeckhausen, Mary Rauh, Katie Wheeler. Second row standing from left to right: Mary Johanna Brown, Susan Martore-Baker, Alison Pyott, Gemma Dreher, Hope Damon, Zib Correll, Sandy Belknap, Pat Yosha, Sally Gayer, Marianne Jones, Deborah Pignatelli. Third row standing from left to right: Karen Prior, Laura Thibault, Rasheeda Eltag Mohamed, Sarah Mattson Dustin, Robin Pollard, Sue Thoresen, Martha Cottrill, Chris Strong.

A New Organization Born From 100 Years of Shared History



The mission of the NH Women's Foundation is to promote opportunity and equality for women and girls in NH through research, education, philanthropy, and advocacy. The vision of the organization is to seek social, political, and economic gender equality in the state of New Hampshire. Robin Pollard, Immediate Past Chair of the NH Women's Foundation and Women's Fund of NH, explained the rationale for the need to create a single organization to focus on advancing gender equality in the Granite State. She said, "We are at a critical juncture with the status of women and girls in our state, the country and across the globe. Time, change, and progress have all led to the advancement of gender equality, yet we find that there is still more work that needs to be done."

"Despite the progress that we have made, there are still many obstacles to overcome. In New Hampshire, the income of women still lags significantly behind that of their male counterparts. Additionally, a 'granite ceiling' prevents representation of women in key leadership areas, even with recent high-profile accomplishments such as New Hampshire having the first all-female delegation in the US Congress in 2012," Pollard added.

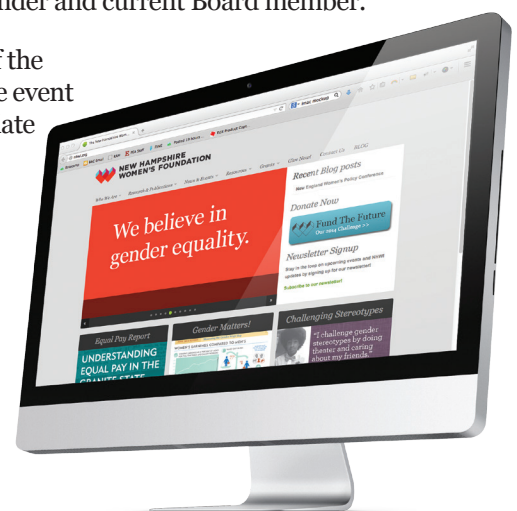
Representatives of these organizations expressed optimism about the merger between their organizations to build a single,

statewide organization focused on women and girls. Focusing on the theme of "better together," the creation of the NH Women's Foundation will build the leadership required to meet the challenges faced in the state, providing a bold, empowered vision for the future.

"Combining the organizational strengths of the Women's Fund and NH Women's Initiative will create greater efficiency, enable progress on an ambitious, yet focused agenda, and establish a new path for gender equality for future generations," noted Barb Zeckhausen, founder and member of several prior organizations.

"The response at the Women Building Community Luncheon to the merger was overwhelmingly positive and enthusiastic," said Mary Rauh, founder and current Board member.

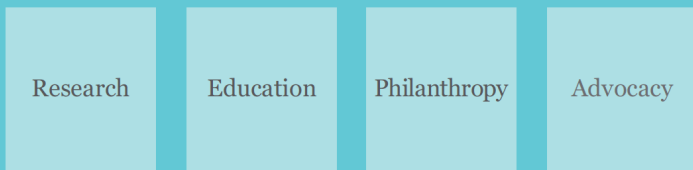
An important part of the announcement at the event included the immediate commitment from businesses and individuals from across the state with gifts to the Fund the Future Challenge. Thank you!



Visit the New Hampshire Women's Foundation website at: nhwomensfoundation.org



Our mission is to promote opportunity & equality for women & girls in New Hampshire through research, education, philanthropy & advocacy.



GENDER EQUALITY

Our vision is to seek social, political, & economic gender equality in New Hampshire.

The New Hampshire Women's Foundation is dedicated to providing research, education, philanthropy & advocacy on the following agenda:



Advocating for Economic Security

- Financial literacy
- Business ownership
- Access to venture capital
- Paycheck fairness
- Secure transportation
- Training & job readiness
- Negotiating skills
- Career counseling



Promoting Women & Girls in Leadership

- Philanthropy
- Community leadership
- Public office
- Entrepreneurship
- Board preparation
- Advocacy
- Public policy
- Mentoring
- Trainings
- Media visibility



Fostering Work & Life Balance

- Shifting roles of women and men in work and family life
- Workplace flexibility
- Family-friendly policies
- Nondiscrimination
- Maternity & paternity policies
- Gender stereotypes



Championing Health & Wellness

- Early childhood development
- Women's health
- Reproductive rights
- Mental health
- Aging issues



Supporting Women & Children at Risk

- Discrimination by age, race, sexual orientation & gender expression
- Domestic violence
- Sexual assault
- Trafficking
- Abuse

New Report on Equal Pay in New Hampshire Combines Statistics and Citizen Feedback

The New Hampshire Women's Foundation, and the Gender Research Institute of Dartmouth have teamed up to create a new report called Understanding Equal Pay in the Granite State. The brainchild of NHWF board member and volunteer Jennifer Alford-Teaster, the report represents a great collaboration not only between these two organizations, but several volunteers as well.

Since 2011, the New Hampshire Women's Foundation has held over 45 listening sessions with NH citizens from various ages, stages, and places. These sessions have all been facilitated and documented by volunteers. The feedback from these sessions has both shaped the NHWF agenda and provided deeper insight into the gender equality issues facing the Granite State. In 2013, 8 listening sessions were held with opinion leaders and human resources professionals specifically on the gender wage gap. This feedback then helped to shape the discussion and recommendations portion of the report.

To download the full report visit nhwomensfoundation.org/2014/09/equal-pay-report/



"It was the 1970's. When a neighbor's daughter came home in tears because girls were not allowed to play Little League Baseball, I decided it was time to start a girls team. That was the beginning of girls baseball in Gilford."

Penny Pitou
Laconia, NH



| Challenging Stereotypes

nhwomensfoundation.org

How do you challenge gender stereotypes?

E-mail us your quote and photo today to be part of our Challenging Stereotypes campaign!

info@nhwomensfoundation.org

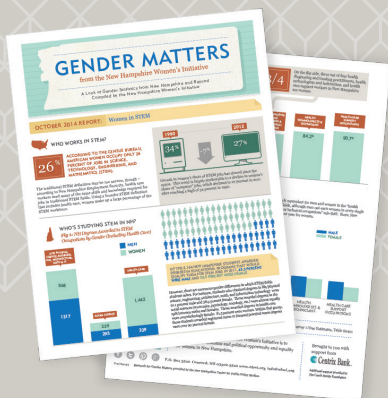


Bob and Sue Thoresen

Leave a Legacy Thoresen Challenge

“We’d like to see the Endowment grow to be \$5,000,000, which would then provide the operating support to allow the NHWF to address the 21st century needs of NH women, girls and boys in perpetuity. We are offering a \$50,000 challenge to grow the Endowment held at the NHCF by matching all gifts of \$1,000 and above designated to this endowment before the end of 2015.”

To designate your gift, please contact Marianne or Ellen at the NHWF office, 603-226-3355.



Gender Matters

Gender Matters is a look at gender statistics from New Hampshire and beyond. Published quarterly, Gender Matters is available as a downloadable pdf. Easy to read and easy to share, check out our latest issue, focused on women in STEM-related fields!

nhwomensfoundation.org/gendermatters

Brought to you by



Additional support provided by
The Couch Family Foundation

Nonprofit Partners in Action

Over the past 15 years the New Hampshire Women’s Foundation has invested more than one million dollars in community organizations to ensure a positive future for women and girls. Our philanthropy continues. Check out six partners who have recently completed programs that showcase your investment at work!



Girls at Work

Girls at Work partnered with the Circle Program to help young girls create a one-of-a-kind masterpiece table out of 200-year-old reclaimed wood. The girls learned about “unleashing the potential” of the old lumber, and of themselves.
More at girlswork.org



Girl Scouts

Maddie, a Junior Girl Scout from Bow, was one of almost 200 girls who had a blast at this year’s Fall Fest. To learn more about the Girl Scouts of the Green and White Mountains visit girlscoutsgwm.org



Holly Tate

UpReach

Driving student Betsy works her way around the ring. UpReach improves the physical, emotional, and psychological development of challenged children and adults through progressive therapies, specifically those centered around the horse.
More at upreachtrc.org



Filmmakers Collaborative

An upcoming documentary film that illustrates the collaborative theater project of college students and incarcerated women in Sullivan and Grafton counties that raises awareness about the circumstances of women in prison. This will be a future public television broadcast.
More at filmmakerscollab.org



Lindsey Wood

Arts in Reach

Arts in Reach celebrated their successful annual fundraiser Tablescape, which showcases stunning table settings created by area designers, landscapers, artists, and florists. Tablescape by Valerie Jorgensen.
More at artsinreach.org



Cheryl Senter for NH Charitable Foundation

WREN

WREN, the Women’s Rural Entrepreneurial Network, located in Bethlehem, celebrates 20 years with more than 1,850 business owners assisted, and nearly 1,400 members.
More at wrenworks.org

Donate Now

Be part of our 2014 Fund The Future Challenge 100% match up to \$25,000
nhwomensfoundation.org



Fund The Future
[>>](http://nhwomensfoundation.org)



Women's Fund of New Hampshire
Two Delta Drive
Concord, NH 03301

Double your impact! Double your gift!

Join the 2014 Challenge and Fund the Future!

All new and increased gifts in 2014 will be matched 100% up to \$25,000!



Fund The Future
[>>](http://nhwomensfoundation.org)

The NH Women's Foundation is the only statewide foundation that identifies women's and girls' needs and invests in the most effective programs to make change happen now. Help us meet this Challenge by 12/31/14 with your gift by using the enclosed envelope or give online!
nhwomensfoundation.org